

# IOT OVER SATELLITE - UBIQUITOUS INTERNET OF THINGS FOR DIGITAL FARMING

Explore the next generation of satellite IoT connectivity tailored for digital agriculture and smart farming with Spacecom. In today's interconnected landscape, IoT systems play a pivotal role in the farming and agriculture sectors. Modern farmers demand seamless connectivity for constant communication with their assets and field monitoring systems. This includes tracking and monitoring farm animals, overseeing environmental conditions, managing automatic irrigation systems, monitoring harvest activities, and gauging power generation and consumption of machinery and facilities.



## Spacecom Tackles The Challenges Of Connectivity Anywhere



Secure, stable, and cost-efficient service



Always-on real-time communication



Off-the shelf hardware with a simple installation and setup, and zero recurring maintenance



Proprietary data optimization software

Spacecom introduces an IoT network designed to enhance visibility, control, and asset management over satellite. Leveraging LoRaWAN\* technology for data collection, Spacecom ensures the transmission of essential data via over satellite. Noteworthy features include animal tracking, automatic irrigation control, greenhouse, and open field management, monitoring of solar panel power consumption/production, harvest and crop management, as well as support for anti-theft and vandalism security systems. The system also facilitates monitoring and tracking of both light and heavy machinery.

\*LoRaWAN is a standard for low power, wide area IoT

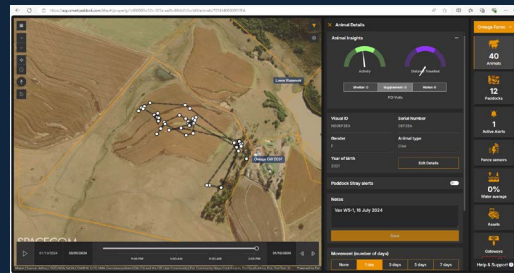
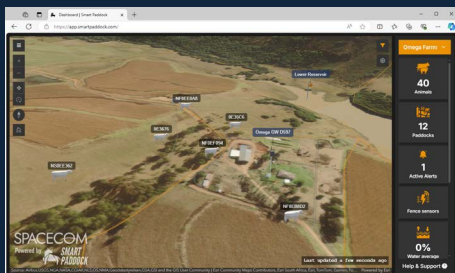


## SPACECOM FOR OFF-GRID IOT PRECISION AGRICULTURE

End-to-end IoT service for individual farmers and farming associations such as LoRaWAN enabled smart GPS tags provide real-time information to producers about the health status, behavior, and accurate geo-location of all the animals in their herd utilizing IoT data straight from the paddock which can be easily accessed from a web dashboard or mobile phone application

Helping operators scale IoT use, as well the efficiencies of digitization and automation.

Ubiquitous connectivity with a backup communication system.



Spacecom digital satellites enable always-on global cloud connectivity for IoT networks anywhere – even in the harshest environments and remotest locations.

For more information about Spacecom, please visit [www.amos-spacecom.com](http://www.amos-spacecom.com)